



## Waters Edge Town Center

3132 21st Lane West  
Bradenton, Florida

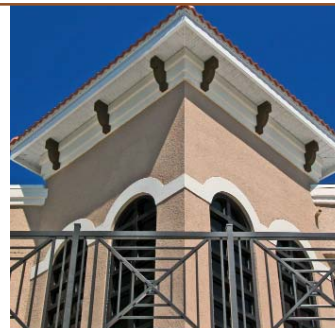
As the heart of a large senior community, the Town Center is a melange of activity rooms, exercise areas and lounges, organized around an expansive exterior pool and patio. The entry and focus of the complex is an ornate three-story clock tower that recalls refined Mediterranean urban forms. Spacious two-story atrium and corridors weave through lounges and dining rooms. Large trench doors integrate interior and exterior at the patio and veranda.

### Services Performed:

Site Planning and Urban Design  
Architectural Design  
Interior Design

### Building Features:

Large Verandas and Patios with Ornamental Railings  
Two-story Atrium Spaces  
Grand Clock Tower  
Mediterranean Clay Tile Voot  
Ornamental Brackets and Corner Detailing



Design/Build Format